

Unit 7 Test Study Guide

- Find the slope of a line that passes through (-2, 6) and (3, 8).

$$\frac{6-8}{-2-3} = \frac{-2}{-5} = \frac{2}{5}$$

- Find the slope of a line that passes through (5, 8) and (3, 6).

$$\frac{8-6}{5-3} = \frac{2}{2} = 1$$

- Find the slope of a line that passes through (2, 6) and (2, 9).

$$\frac{6-9}{2-2} = \frac{-3}{0} = \text{undefined}$$

- Find the slope of a line that passes through (4, 6) and (3, 6).

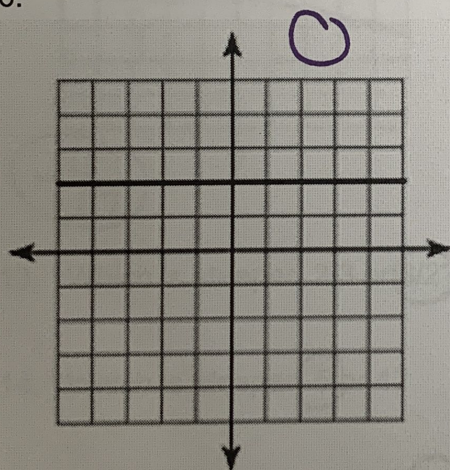
$$\frac{6-6}{4-3} = \frac{0}{1} = 0$$

- Find the slope of a line that passes through (-1, 5) and (5, 4).

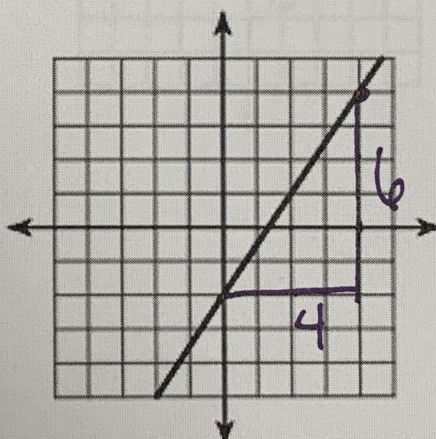
$$\frac{5-4}{-1-5} = \frac{1}{-6}$$

Find the slope of each.

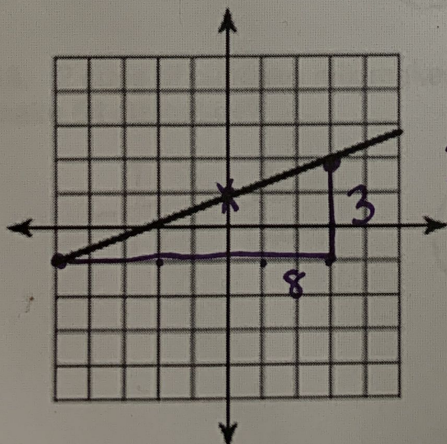
6.



7.

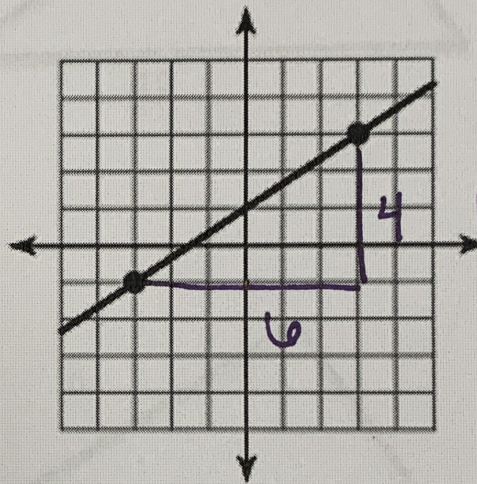
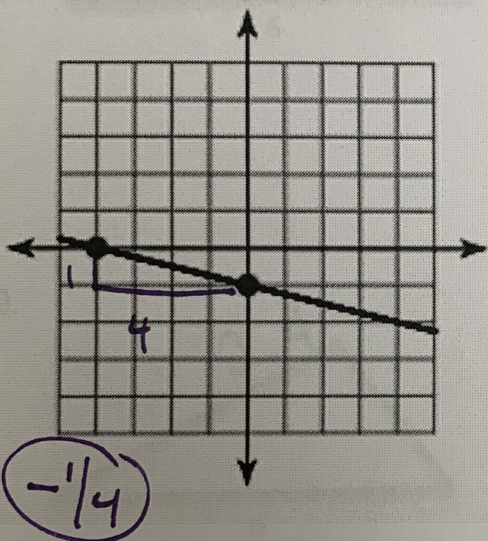
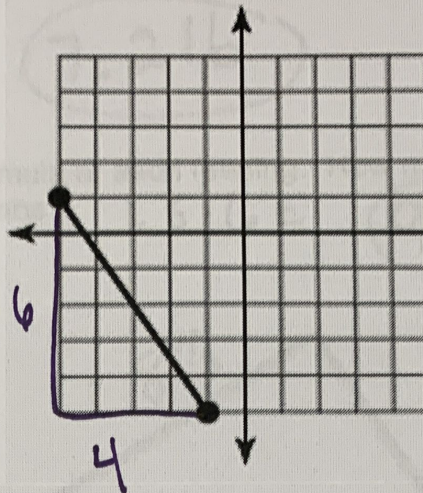
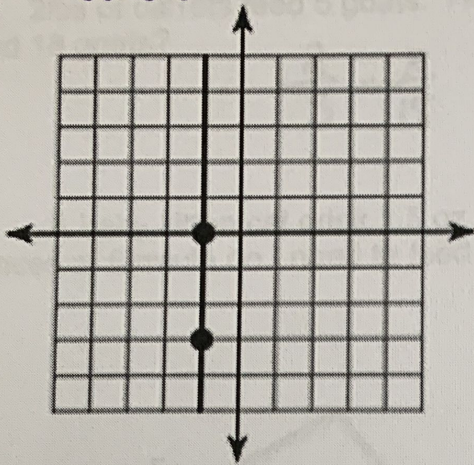


$$\frac{6-4}{2-0} = \frac{2}{2} = 1$$



$$\frac{2-1}{8-0} = \frac{1}{8}$$

undefined



13. Which is steeper $2/3$ or $3/2$?

14. Which is steeper -5 or 4 ?

15. Which is steeper $1/10$ or $2/5$?

16. 2 cups of cupcake mix makes 48 cupcakes. How much mix do I need to make 64 cupcakes?

$$\frac{2}{48} = \frac{x}{64}$$

$2 \frac{2}{3}$ cups

17. 2lbs of carrots feed 5 goats. How many pounds of carrots do I need to feed 18 goats?

$$\frac{2}{5} = \frac{x}{18}$$

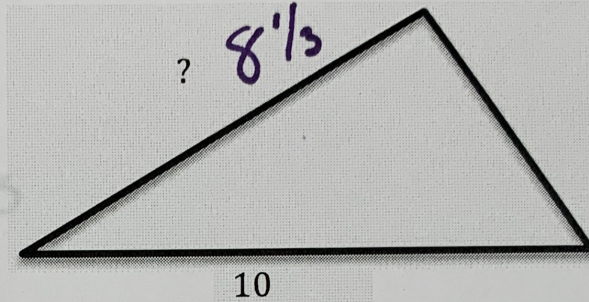
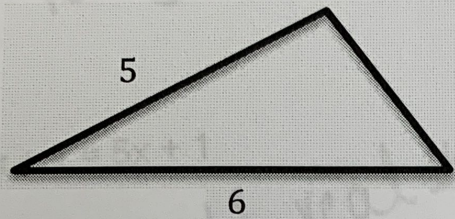
$$7.2 \text{ lb}$$

18. A baby kitten cat drink 1.5 oz of formula at each feeding. How many ounces of formula do I need to feed 6 kittens?

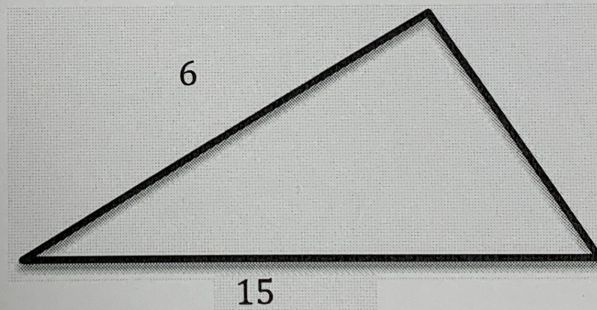
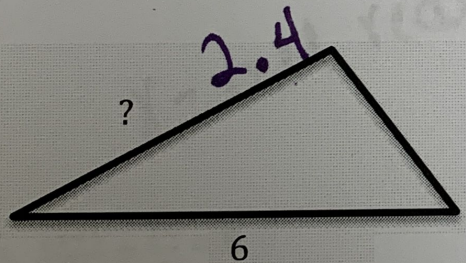
$$1.5 \cdot 6 =$$

$$9 \text{ oz}$$

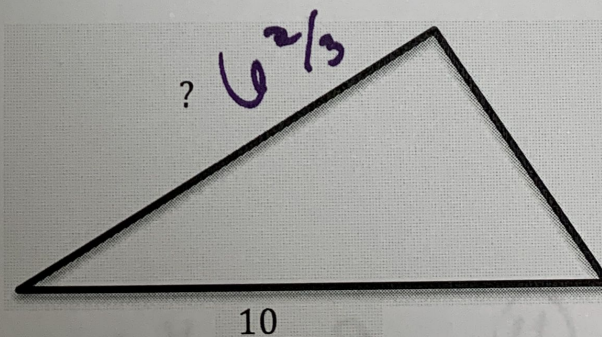
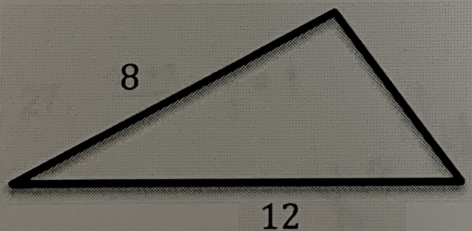
19.



20.



21.



22. $5 - (2x - 4) = 5x + 3$

or

$$x = 6/7$$

23. $4x + 3 = 4x - 2$

NO solution

24. $5x + 1 = 5x + 1$

$x = \text{all real \#s}$

25. $3x + 4 = -(-3x - 4)$

$x = \text{all real \#s}$

26. $\frac{3x+1}{5} + \frac{2x}{2} = 6$

$$x = 29/8$$

27. $\frac{2x+3}{4} + \frac{x}{2} = 1$

$$x = 1/4$$

28. Simplify: $\frac{6+2(4)-6}{5+10(3+1)}$

$$\frac{6+8-6}{1/2(4)} = \frac{8}{2} = \textcircled{4}$$

29. Simplify: $\frac{6+2 \div 8(2)}{2-6 \div 3(2)}$

$$\frac{6 + \frac{1}{4} \cdot 2}{2 - 2 \cdot 2} = \frac{6 + \frac{1}{2}}{2 - 4} = \frac{6.5}{-2} = -3.25$$